



HATSAN
ARMS COMPANY

ESCORT
Semi Automatic Shotgun



ESCORT

DYNOVA

Instruction Manual

Read this manual before using your shotgun

TABLE OF CONTENTS	Pages
SAFETY MEASURES_____	3
NOMENCLATURE_____	4
PARTS LIST_____	5
EXPLODED VIEW_____	6-7
TECHNICAL FEATURES & DATA_____	8
EXTERNAL CONTROL PARTS _____	8
ASSEMBLY INSTRUCTIONS _____	9
LOADING THE FIREARM _____	10
USE OF THE MIGRATORY MAGAZINE PLUG _____	11
FIRING _____	12
USE OF THE CHOKES_____	13
UNLOADING_____	14
DISASSEMBLY INSTRUCTIONS_____	15
CARE, CLEANING & LUBRICATION _____	15
ILLUSTRATIONS _____	17

Congratulations and thank you for choosing Hatsan ESCORT DYNOVA inertia semi automatic shotgun.

WARNING!

Read very carefully this instruction manual before handling this shotgun. Incorrect handling may result in serious injury or death to you or bystanders.

Always keep this manual with your shotgun. Make sure you understand all the operation instructions, safety procedures and warnings in this manual before you handle the shotgun.

If you sell, lend or give the shotgun to another, make sure this manual goes with it.

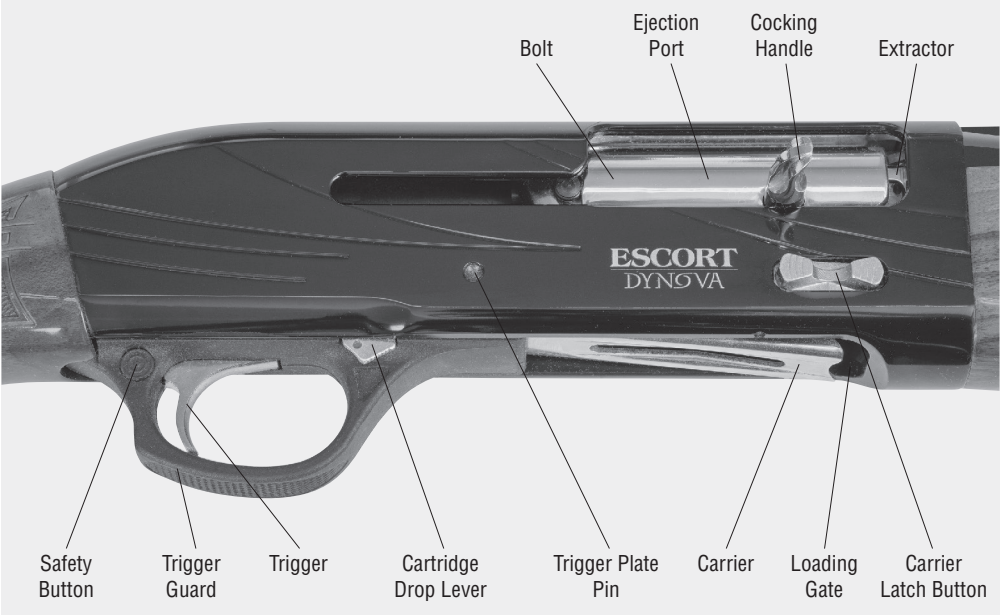
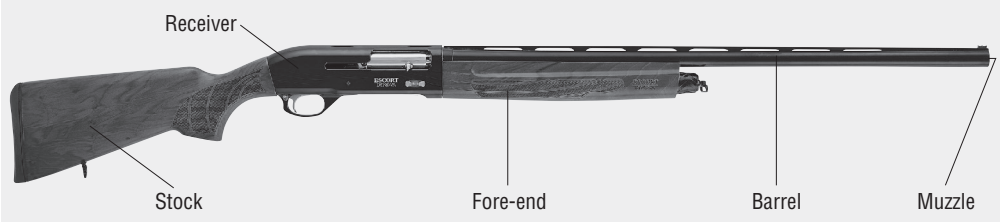
WARNING!

Always keep your finger outside the trigger guard and be sure that the safety is fully engaged until you are ready to fire. The safety is fully engaged only when its red ring is completely covered and it can be moved no further toward the “on” position.

SAFETY MEASURES

- Always point the shotgun in a safe direction even though it may be unloaded. Do not point the shotgun at anything you do not intend to shoot. Avoid all horseplay while handling a shotgun.
- Keep your finger away from the trigger when operating any other part of the shotgun's mechanism.
- Keep the safety “ON” until you are actually ready to fire. Treat every shotgun with respect and caution.
- Keep your fingers away from the muzzle. Never pull a shotgun toward you by the muzzle.
- Be sure the barrel is clear of obstructions.
- Keep your shotgun unloaded when not in use and never load your shotgun if you will not shoot.
- Always aim at a safe target, taking care that it does not conceal any other object. Be sure of your target and what lies beyond before you pull the trigger. Never shoot at sounds. To avoid ricochets, do not shoot at a flat or hard surface or at water.
- Store shotguns and ammunition separately, beyond the reach of children, better if under lock and key. Shotguns should always be unloaded when stored.
- Never carry a loaded shotgun inside a vehicle, house, camp, or public place. When transporting the shotgun keep the shotgun “on safe” and unloaded. Never climb a tree or fence, or jump a ditch with a loaded shotgun.
- Never rely on any one's words that the shotgun is “on safe” or unloaded. Always check to see if the shotgun is “on safe” and unloaded when getting it from another person or storage.
- Avoid alcoholic beverages or drugs before or during shooting.
- Always use eye & hearing protection and make sure bystanders are similarly protected.
- Although the shotgun itself does not contain any lead, it fires ammunition containing lead or lead compounds, which are known to be dangerous for health. When shooting or cleaning shotguns, take protective health measures. Avoid exposure to the lead while handling and wash your hands after contact. Proper air ventilation is absolutely necessary when shooting indoors.
- Any damage, malfunction, injury, or death resulting from the use of faulty, incorrect, non-standard, remanufactured, hand loaded or reloaded ammunition is the sole responsibility of the user.
- The user is solely responsible for the damage, injuries or death resulting from carelessness or misuse of the shotgun.

NOMENCLATURE

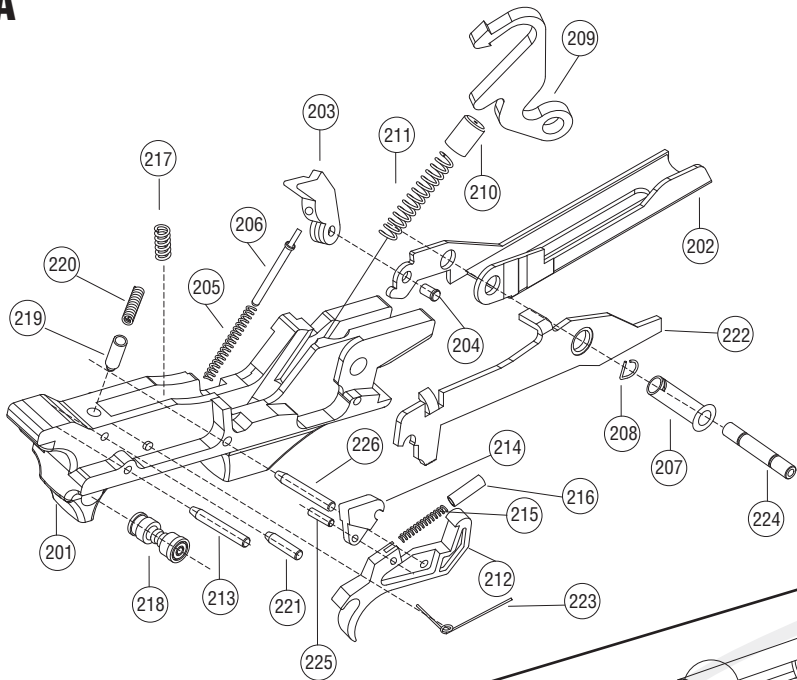


PARTS LIST

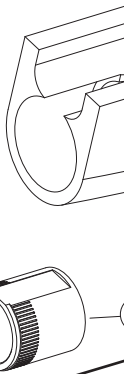
Part Number	Part Name	Part Code	Part Number	Part Name	Part Code
101	Receiver	35-12-101	404	Magazine Spring Retaining Plug	35-12-404
102	Carrier Latch Button	35-12-102	405	Fore-End Cap	35-12-405
103	Carrier Latch Button Pin	35-12-103	406	Swivel Rivet Plug	35-12-406
104	Carrier Latch Button Spring	35-12-104	407	Swivel Body	35-12-407
105	Carrier Latch Rivet	35-12-105	408	Swivel Rivet	35-12-408
106	Carrier Latch Spring	35-12-106	409	Swivel Pin	35-12-409
107	Carrier Latch Pin	35-12-107	410	Magazin Plug	35-12-410
108	Carrier Latch Retaining Plug	35-12-108	411	Magazin Extension	35-12-411
109	Carrier Latch	35-12-109	501	Forend	35-12-501
201	Trigger Plate	35-12-201	502	Forend Flat Washer	35-12-502
202	Carrier	35-12-202	503	Forend Flat Spring Washer	35-12-503
203	Carrier Level	35-12-203	504	Forend O-Ring	35-12-504
204	Carrier Level Rivet	35-12-204	505	Forend Bushing	35-12-505
205	Carrier Level Spring	35-12-205	601	Bolt	35-12-601
206	Carrier Level Pin	35-12-206	602	Locking Head	35-12-602
207	Carrier Pin	35-12-207	603	Inertia Spring	35-12-603
208	Carrier Pin Retaining Plug	35-12-208	604	Locking Head Pin	35-12-604
209	Hammer	35-12-209	605	Firing Pin	35-12-605
210	Hammer Spring Guide	35-12-210	606	Firing Pin Spring	35-12-606
211	Hammer Spring	35-12-211	607	Firing Pin Stop	35-12-607
212	Trigger	35-12-212	608	Firing Pin Stop's O-Ring	35-12-608
213	Trigger Stop Pin	35-12-213	609	Extractor	35-12-609
214	Sear	35-12-214	610	Extractor Spring	35-12-610
215	Sear Spring	35-12-215	611	Extractor Pin	35-12-611
216	Sear Pin	35-12-216	612	Bolt Pusher Pin	35-12-612
217	Trigger Spring	35-12-217	613	Bolt Pusher Pin Cup	35-12-613
218	Safety Button	35-12-218	614	Bolt Pusher Pin Spring	35-12-614
219	Safety Spring Guide	35-12-219	615	Bolt Pusher Pin Spring's Pin	35-12-615
220	Safety Spring	35-12-220	616	Recoil Spring Plug	35-12-616
221	Safety Pin	35-12-221	617	Recoil Spring Tube	35-12-617
222	Cartridge Drop Lever	35-12-222	618	Recoil Spring Screw	35-12-618
223	Cartridge Drop Lever Spring	35-12-223	619	Recoil Spring	35-12-619
224	Trigger Assembly Pin	35-12-224	620	Action Bar	35-12-620
225	Sear Connecting Pin	35-12-225	621	Action Bar Pin	35-12-621
226	Trigger Pin	35-12-226	622	Cocking Handle	35-12-622
301	Slug Barrel	35-12-301	623	Cocking Handle Screw	35-12-623
302	Barrel Tang	35-12-302	624	Bolt Handle Bear	35-12-624
303	Barrel Tang Pin Guade	35-12-303	625	Bolt Handle Bear Spring	35-12-625
304	Barrel Tang Pin Screw	35-12-304	701	Stock	35-12-701
305	Barrel Tang Pin	35-12-305	702	Butt-Plate	35-12-702
306	Barrel Tang Pin Spring	35-12-306	703	Stock Screws	35-12-703
307	Barrel Tangh Pin Guade Rivet	35-12-307	704	Stock Swivel	35-12-704
308	Ventilated Rib	35-12-308	705	Stock Connection Rod Nut	35-12-705
309	Barrel Ring	35-12-309	706	Stock Connection Rod Washer	35-12-706
310	Barrel Ring Bearing Ball	35-12-310	707	Stock Connection Rod Washer	35-12-707
311	Barrel Ring Spring	35-12-311	901	Stock (Complete)	35-12-901
312	Metal Bead Front Sight	35-12-312	902	Triger Group(Complete)	35-12-902
313	Inner Choke	35-12-313	903	Bolt(Complete)	35-12-903
314	Choke Wrench	35-12-314	904	Recoil Tube (Complete)	35-12-904
401	Magazine Tube	35-12-401	905	Fore-End Cap (Complete)	35-12-905
402	Magazine Spring Follower	35-12-402	906	Fore-End (Complete)	35-12-906
403	Magazine Spring	35-12-403	907	Stock Swivel (Complete)	35-12-907

EXPLODED VIEW

A



B



F

H

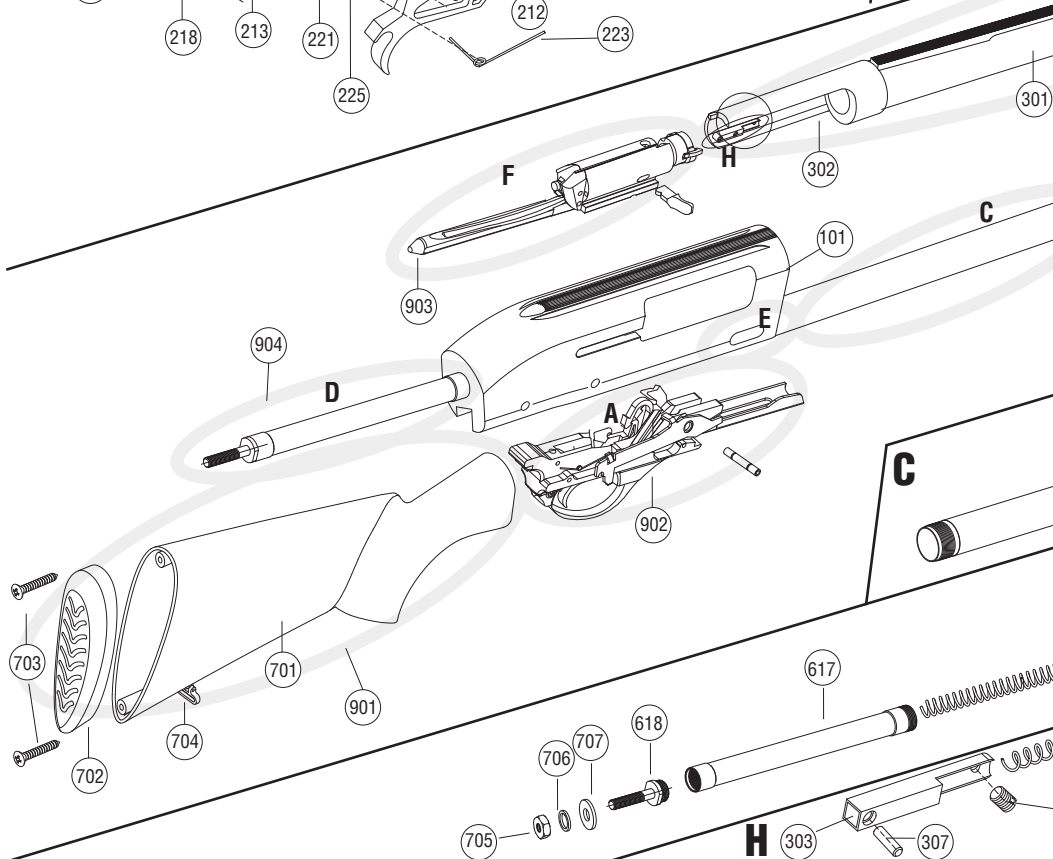
C

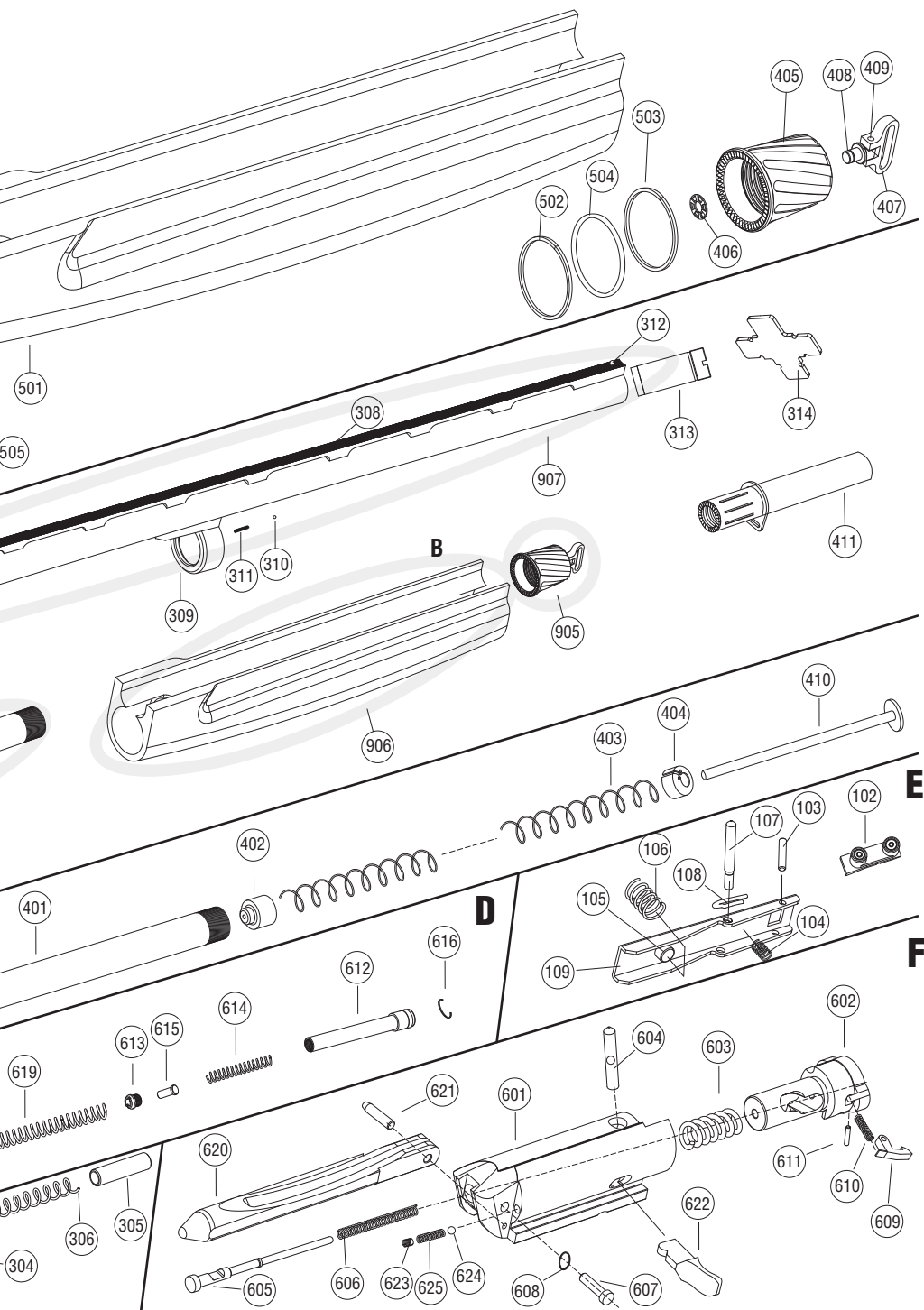
D

E

A

C





TECHNICAL FEATURES AND DATA

Fill in below according to your shotgun

Model	Serial No	Barrel Length	Chamber	Caliber	Type
					S/A shotgun

Alternatives in barrel length;

- 24” (61 cm)
- 26” (66 cm)
- 28” (71 cm)
- 30” (76 cm)

Synthetic stocks are made from advanced polymer compounds, wooden stocks are made from kiln dried and moisture stabilized Turkish walnut.

EXTERNAL CONTROL PARTS

(“Right” and “Left” refer to the shotgun as seen by a shooter holding it in the firing position.)

(“Front” refers to the barrel side of the shotgun and “Back” refers to the stock side of the shotgun.)

Cross Button Safety:

- It is located behind the trigger on the trigger housing.
- When the red ring on its left side is visible, it means that the cross button safety is disengaged
- (“**OFF**”) and shotgun is ready to fire. **(1)**
- To engage the cross button safety, push it fully to the right until its red ring disappears and it will move no further. The safety is now **ON**, blocking the trigger from being pulled. **(2)**
- To take the safety “**OFF**”, push the button fully to the left, exposing its red ring. The trigger can now be pulled.

WARNING!

- **Always keep the cross button safety “ON” until you are ready to fire and the muzzle is pointing at the target.**
- **Make sure that you understand how all controls work before you attempt to load the shotgun.**
- **Keep the muzzle pointed in a safe direction and your finger off the trigger when operating the safety. Malfunctions which may cause a shotgun to fire is engaged or disengaged are rare but can happen. Even if an accidental firing should occur, nobody will be hurt if you follow this rule.**

THREE THINGS TO REMEMBER ABOUT SAFETIES

- **NEVER TOTALLY DEPEND ON A MECHANICAL SAFETY.** It is not a substitute for proper shotgun handling. Like all mechanical devices the safety is subject to breakage or malfunction and can be defeated by wear, abuse, dirt, corrosion, incorrect assembly of the shotgun, improper adjustment or repair, or lack of maintenance.
- **NO MECHANICAL SAFETY IS “CHILDPROOF” OR “FOOLPROOF”.** No safety ever invented can be relied upon to prevent an accidental shooting by a determined child or a grownup idiot “playing” with a shotgun.
- **TREAT EVERY SHOTGUN AS IF YOU EXPECT ITS MECHANICAL SAFETY NOT TO WORK.** You will be astounded at how cautious you become, and how little tolerance you will have for the complacency of others.

Carrier Latch Button: It is located on right front side of the receiver. When the bolt is locked open, depressing this button releases the bolt and closes it. Also depressing this button releases the carrier.

WARNING!

The front part of the carrier latch button is used for holding the shotshells and rear part of this button is used to empty the shotshells from the magazine. Pressing the rear part of this button will cause several shotshells feed to the barrel when the shotgun is cocked.

Carrier: It is located under the receiver, in front of the trigger guard.

After depressing the carrier latch button; carrier can be pushed in for loading the firearm. **(3)**

Trigger: It is located in the trigger guard. With the safety “**OFF**” and a cartridge in the chamber, pulling the trigger fires the shotgun.

Bolt Cocking Handle: It is located at the right side of the shotgun, protruding from the bolt. It is used for retracting the bolt. **(4)**

Fore-end Cap: It is located at the end of the magazine tube, in front of the fore-end and under the barrel. It is screwed (clock-wise) on the magazine tube to keep the fore-end and barrel properly in their place.

ASSEMBLY INSTRUCTIONS

Your new Escort Dynova inertia semi auto shotgun is packed dismounted in its box. This consists of “**Barrel-Forend**” and “**Stock-Receiver**” subassemblies. First of all remove all parts from the nylon bags. **(5) & (6)**. Before proceeding with the assembly of the shotgun, carefully check the “**Nomenclature**” and “**Safety Measures**” sections.

WARNING!

Before assembling the barrel, check the barrel. Bore and cartridge chamber must be clean and there should be no obstructions in them. Look through the loading gate and assure that magazine tube and receiver are empty.

Assemble the barrel as follows:

- Unscrew (counter-clockwise) the forend cap **(7)**
- The shotgun is packed with the bolt locked open. If not, retract the the bolt backwards by means of the cocking handle and lock it at the rear **(8)**

WARNING!

As you do this operation make sure the action bar is aligned to the bolt pusher pin housing. Otherwise you cannot retract the bolt. If the action bar is not aligned to the bolt pusher pin housing, you can align it by using a thin rod or a screw driver **(9)**

Grab the Barrel-Forend unit and insert it over the magazine tube **(10)**. Insert the barrel tang into the receiver. Here the barrel tang should be inserted between the bolt and receiver **(11)**. Continue the inserting the barrel. Meanwhile the barrel ring moves over the magazine tube.

WARNING!

If you fall off the forend from the barrel (or if you remove the forend); make sure the forend washers and o-ring do not get lost. If you need to put the washers and o-ring back to their place; it is important that you place first the flat washer, then the o-ring and then spring washers into the forend; and then assemble the forend on the barrel **(12)**

- Hold the shotgun vertically over its butt plate. By depressing the barrel; screw (clockwise) the forend cap until it is tight and forend is firmly held in place. **(13)**

- Check that the forend, barrel and forend cap are securely in place. Keeping fingers away from the ejection port and the path of the bolt cocking handle, depress the carrier latch button so that the bolt snaps closed and locks into the barrel extension. **(14)**
- Depress the trigger to lower the hammer.

WARNING!

IF

- Bolt does not slide forward
- There is a gap between the fore-end and receiver
- Barrel extension protrudes from the receiver

that means you have not assembled the shotgun properly. In such a case, immediately reverse assembly procedures and re-assemble your shotgun making sure that the barrel is completely inserted into the receiver, fore-end is completely in place and there are no gaps. If you still cannot assemble the shotgun properly take it to a qualified gunsmith for help.

After you assembled your shotgun or if you are taking it to a gunsmith for help, make sure that you keep the safety “ON**”.

LOADING THE SHOTGUN

WARNING!

- Always keep your fingers away from the trigger if you do not intend to fire.
- Always check cartridge chamber, magazine tube and receiver to see that the shotgun is not already loaded.
- While you load the shotgun, always point the barrel in a safe direction.
- Always use the correct ammo size, which your shotgun is chambered.

Load the shotgun as follows:

- Point the muzzle in a safe direction!
- Put the safety “**OFF**” so that the bolt can be moved and locked at the rear.
- Retract the bolt by means of cocking handle until it is locked at the rear. **(8)**
- Insert through the ejection port the first round into the cartridge chamber. **(15)**
- Keeping fingers away from the ejection port and the path of the bolt cocking handle depress the bolt/carrier release button, so the bolt snaps closed and is locked at the front **(14)**. Put the safety to “**ON**” **(1)**.
- Turn the shotgun upside down so that the carrier is facing up. By depressing the bolt/carrier release button with the shot shells, insert up to 4 cartridges (if the magazine extension assembled up to 7 cartridges and if the magazine plug assembled up to 2) into the magazine tube until the last cartridge engages the stop tooth. **(3)**

WARNING!

Shotgun is now loaded and ready to be fired.

USE OF THE “MAGAZINE EXTENSION”

Magazine extension when assembled increases the capacity of the shotgun from 4+1 to 7+1.

***PS.** Magazine extension is optional. Consult your dealer about your country's laws regarding the use.*

It is recommended to have your magazine extension assembled by a qualified gunsmith.

WARNING!

Make sure that the shotgun is unloaded and the safety “ON” before assembling the magazine extension.

Assemble the magazine extension as follows:

- Engage safety and make sure that the shotgun is unloaded, if it is loaded unload it (see Unloading section).
- Unscrew (counter-clockwise) the fore-end cap. **(7)**
- With a snipe nose or hawknosed pliers, start extracting the magazine spring retaining plug very slowly. While doing this, press and control the magazine spring retaining plug with your other hand to prevent the magazine spring flying out of the magazine tube with very high impact and velocity which may be very dangerous. **(16)**

WARNING!

Removing or replacing the magazine spring, its retaining plug, the magazine extension or the magazine plug can be dangerous if done carelessly. These parts are under heavy spring tension and can fly out of the magazine tube with high velocity and considerable force if not properly restrained. Therefore be extremely careful when performing these operations. Wear protective glasses. Keep a firm grip on the parts as they are being assembled or disassembled. Point the shotgun in a safe direction so that no one can be struck if any of these parts is accidentally released.

- After removal of the magazine spring retaining plug, place the magazine spring inside the magazine tube and put the magazine extension over the magazine spring.
- With your fingers compress the magazine spring into the magazine tube, meanwhile with your other hand press the magazine extension downwards very slowly and tightly.
- Compress the magazine spring by means of magazine extension until the magazine extension can be screwed on the threaded part at the end of the magazine tube. Then screw (clock-wise) the magazine extension until it seats completely on the magazine tube, i.e. magazine tube would do the duty of the fore-end cap. **(17)**
- Now the capacity of the shotgun is increased to 7+1 (7 cartridges in the magazine tube and 1 cartridge in the cartridge chamber).

NOTE: To disassemble the magazine extension, reverse assembly of it by being extremely careful while unscrewing (counter-clockwise) the magazine extension to remove the magazine spring from the magazine tube, since they may fly out with high impact and velocity.

USE OF THE “MIGRATORY MAGAZINE PLUG”

Migratory magazine plug when assembled decreases the capacity of the shotgun to 2+1 for safety reasons or for the regulations varying from country to country.

PS. Migratory magazine plug is optional. Consult your dealer about your country's laws regarding use of this.

It is recommended to have your migratory magazine plug assembled by a qualified gunsmith.

NOTE: Follow the warning in the “use of the magazine extension” section for the migratory magazine plug as well.

Assemble the migratory magazine plug as follows:

- Follow the first three steps and all the warnings in the “assembly of the magazine extension” section.
- Keeping the flat end of the migratory magazine plug at the top, insert it inside the magazine spring. **(18)**
- Place the magazine spring retaining plug on the magazine spring and migratory magazine plug assembly. Then, with your fingers, compress the spring into the magazine tube very carefully, meanwhile, with your other hand press the magazine spring retaining plug downwards very slowly and tightly until

- it completely seats in its place and holds the magazine spring by itself. **(19)**
- Place the fore-end washer on the fore-end (for wood stocks only) and screw (clockwise) the fore-end cap until it is completely in its place. **(13)**

Now the capacity of the shotgun is reduced to 2+1 (2 cartridges in the magazine tube and 1 in the cartridge chamber).

NOTE: To disassemble the migratory magazine plug, reverse assembly procedure of it.

FIRING THE SHOTGUN

WARNING!

- When firing, keep your fingers and other objects away from the path of the bolt and the bolt cocking handle since they move backward and forward with considerable force and velocity.
- Keep the safety “ON” and your finger outside the trigger guard until you are actually ready to fire and aimed at your intended target.
- Bolt will remain open (locked to the rear) after the last round is fired, but never rely on this. Always check with your eyes to verify no cartridge is left in the chamber and magazine.
- Your semi auto shotgun, like other semi auto shotguns, feed the next round from the magazine tube into the cartridge chamber each time you fire. Since no mechanical force is necessary to fire another round after the previous one is ejected, always be aware that the shotgun is ready to fire as long as it is loaded.

Fire with your shotgun as follows;

- Wear eye and ear protection.
- Engage safety and load your shotgun. (see Loading section)
- Point the barrel at your intended target.
- Disengage safety and take aim.
- Press the trigger.

It is not uncommon while loading or firing any semi-automatic shotgun to experience a malfunction in which an unfired cartridge or fired cartridge case becomes jammed between the bolt and the barrel. Clear such a stoppage as follows. Point the muzzle in a safe direction. Pull back the bolt and hold or lock it to the rear. Put the safety “ON”. The jammed cartridge or case can then be removed by shaking it out, or picking it out with your fingers.

WARNING!

- If the trigger is pulled and a “click” is heard but a chambered cartridge fails to fire, follow the below instructions.
 1. Point the shotgun in a safe direction.
 2. Wait 30 seconds.
 3. Eject the cartridge from the chamber by retracting the bolt. Examine the cartridge primer. If it has been deeply indented by the firing pin, the cartridge is defective. If it has been indented lightly or not at all, rechamber the cartridge and try again.
 4. If still it does not fire unload the shotgun and take it to a qualified gunsmith.
- When you are firing, if you notice that the sound of any cartridge is considerably louder or softer than the previous one, stop firing and do not load the shotgun anymore. In such a case, follow the below instructions.
 1. Point the shotgun in a safe direction.
 2. Engage safety.
 3. Follow the instructions in the “unloading section” and unload the shotgun completely.
 4. With the shotgun unloaded, check the barrel for blockage or damage, and inspect the mechanical portions and receiver of the shotgun for damage. If you notice any damage or malfunction in the shotgun take it to qualified gunsmith.

USE OF THE “CHOKES”

Shotgun choke is a constriction in the end of a shotgun barrel which focuses the shot into a tighter stream--much like a nozzle on the end of a water hose, which does exactly the same thing for exactly the same reason.

There are two different choke-systems:

- 1. **Screw-in (Inner) Chokes.**
- 2. **Fixed Cylinder Bore Choke.**

Choice of the chokes depends on the barrel length.

Choke	Barrel Length (inches / centimeters)			
Screw-in	24 / 61	26 / 66	28 / 71	30 / 71
Fixed Cylinder Bore	24 / 61			

WARNING!

Use the choke type that is suitable to your shotgun’s barrel length.

1. Screw-in (Inner) Chokes:

There are 5 different screw-in (inner) chokes that can be used on your shotgun. **(20)**

- F (Full /)
- IM (Improved Modified //)
- M (Modified ///)
- IC (Improved Cylinder ////)
- Cyl-Skeet (Cylinder-Skeet /////)

Your shotgun is packed with either 3-choke system or 5-choke system. If your shotgun has the screw-in choke configuration.

Most common and preferred 3-choke system is F, M, IC chokes. However different combination

3-choke systems are possible depending on the conditions of different countries.

5-choke system contains all the inner chokes being F, IM, M, IC, Cyl-Skeet.

Check the number and markings on the chokes to find out the inner choke configuration of your shotgun.

All screw-in (inner) chokes have one, two, three, four or five notches, which indicate the type of the screw-in choke, i.e. F choke has one, IM has two, M has three, IC has four and Cyl-Skeet has five notches. Please also check the markings on chokes.

NOTE: M, IC and Cyl-Skeet choke tubes are good for steel shot. F, IM Choke tubes are lead shot only!

Choke	Constriction (12 Gauge)	Pattern Percentage
Cylinder / Skeet	0-0.005" (0-0,12 mm)	40% - 53%
Improved Cylinder	0.010" (0.25 mm)	57%
Modified	0.020" (0.50 mm)	67%
Improve Modified	0.030" (0.75 mm)	73%
Full	0.040" (1.00 mm)	75%

Above table shows the constriction & pattern percentage versus inner chokes. Pattern percentages are taken at a distance of 36,5 meters (40 yards). The number of pellets striking within a 76 mm (30 inch) circle, drawn so as to encompass as many pellet holes as possible, is counted and compared with the number of pellets contained in an identical unfired shell. The result is expressed as a percentage. As can be seen from above table Full inner choke has the most accuracy and accuracy decreases from Full to Cyl-Skeet inner choke which has the least accuracy. Expansion of the shot pellets within a distance is the least in Full inner choke and it is the most in Cylinder-Skeet inner choke.

Turkey Hunting Choke Tube (Extra Full Choke)

Extra full choke tubes are also available which are specially designed for turkey hunting.

NOTE: *Extra full choke tubes are for lead shot only.*

WARNING!

- **Make sure the shotgun is unloaded and the safety “ON” before you assemble/disassemble the chokes.**
- **Under safety conditions (cartridge chamber empty, receiver empty, magazine tube empty, safety engaged), check whether the choke worked loose during use. In such a case, the choke must be tightened to the end by means of the choke wrench.**

Assembly & disassembly of the inner chokes:

- Take one of the inner chokes of your choice. Place it inside barrel and by means of choke wrench; screw (clockwise) it to the end until it is completely tightened. **(21)**
- To disassemble, unscrew (counter-clockwise) by means of choke wrench and remove it.

3. Fixed Cylinder Bore Choke

Fixed Cylinder Bore Choke means the choke constriction is pre-machined into the barrel at the factory. No choke adjustments can be made and no interchangeable chokes can be put.

UNLOADING

WARNING!

Keep your fingers off the trigger and keep the safety “ON”.

Unload your shotgun as follows;

- Point the shotgun in a safe direction and engage the safety. **(2)**
- Retract the bolt by means of cocking handle, and eject the live round. **(22)**
- Keeping fingers away from the ejection port and the path of the bolt cocking handle, depress the bolt/carrier release button to lock the bolt at the front. **(14)**
- In order to empty the shotshells in the magazine tube; while the bolt is locked at the front depress the carrier inwards with your right index finger. **(23)** With a finger of your left hand; hold the bottom of the shotshell in the magazine. With your right thumb finger press the back part of the carrier latch button and remove the first shotshell from the magazine **(24)**. Repeat this process until the magazine is empty.
- When no more rounds are ejected from the magazine tube, visually check to assure the magazin tube and receiver are empty, and retract the bolt enough to see and make sure that the cartridge chamber is empty.
- Disengage safety and pointing the shotgun in safe direction (even though it may be unloaded), depress the trigger to lower the hammer.

DISASSEMBLY INSTRUCTIONS

WARNING!

Before disassembling the shotgun, always make sure that the shotgun is not loaded, barrel is pointed in a safe direction and safety “ON”.

Disassemble shotgun as follows:

- When the bolt is closed and locked in forward position, Unscrew (counter-clockwise) the forend cap and remove it (7)
- Hold the barrel and forend together, slide them along the magazine tube and remove them (25)
- Remove the cocking handle by pulling it out (26)
- Remove the bolt from the receiver by pulling it from the locking head (27)
- To remove the trigger assembly, first punch out the trigger assembly pin with a proper pin and hammer (28)
- Depress the back part of the carrier latch button and press down the trigger assembly from the carrier. Then lift up the trigger assembly and remove it from the receiver (29)

Follow the instructions below in order to disassemble the bolt

- With one hand control the firing pin so it does not fly out and with your other hand pull out the firing pin stop (30)
- Remove the firing pin and its spring (31)
- Remove the locking head pin as shown in figure (32)
- Remove the locking head by pulling it out (33)

You can remove the trigger assembly when the barrel and bolt is assembled on the shotgun.

NOTE: To reassemble the shotgun, reverse the above disassembly process.

WARNING!

- During assembly the locking head into the bolt; make sure the extractor is on the same side of the cocking handle (33)
- After bolt is inserted into the receiver; make sure the action bar is aligned to the bolt pusher pin housing. Otherwise you cannot retract the bolt. If the action bar is not aligned to the bolt pusher pin housing, you can align it by using a thin rod or a screw driver (9)
- When putting back the forend washers; it is important that you place first the flat washer, then the o-ring and then spring washers into the forend; and then assemble the forend on the barrel (12)

CARE, CLEANING AND LUBRICATION

WARNING!

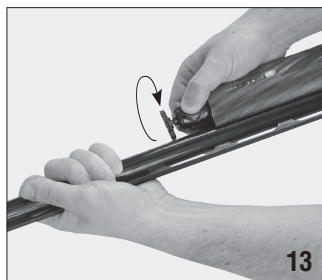
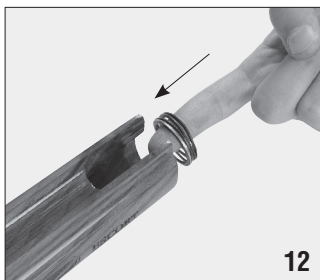
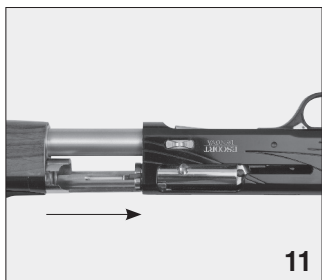
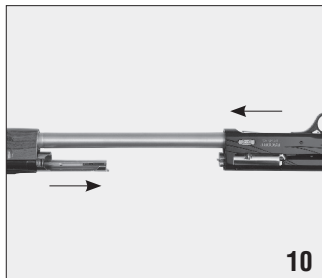
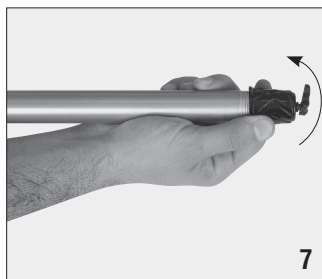
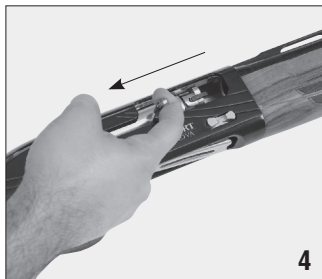
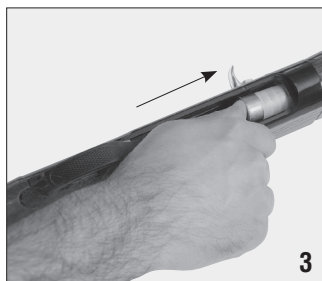
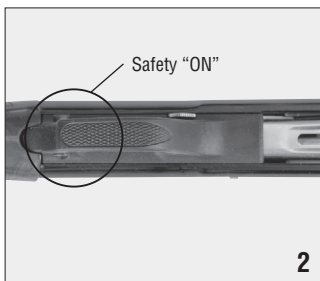
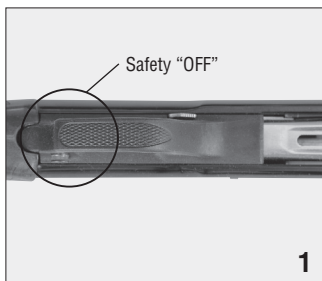
Before cleaning or lubricating the shotgun make sure it is unloaded and the safety “ON”.

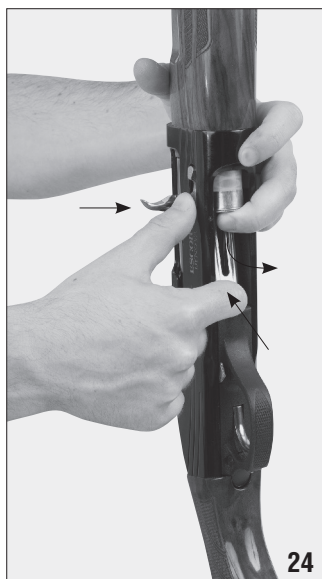
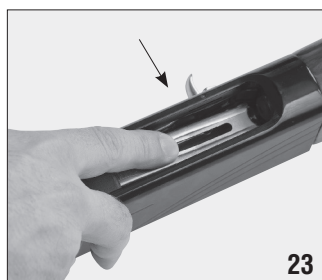
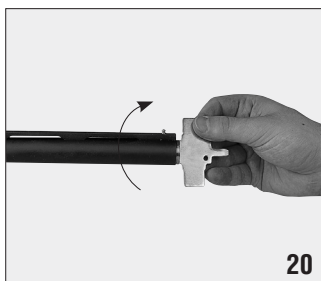
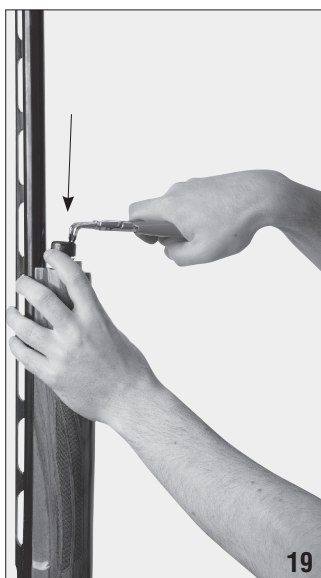
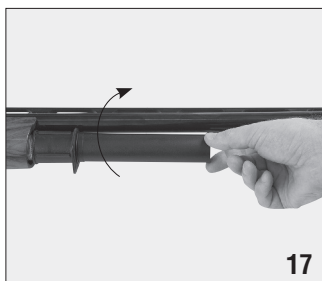
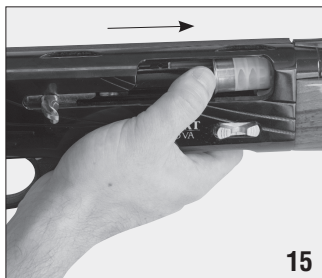
It is recommended to disassemble the shotgun to clean and to lubricate it when grease or dirt particles accumulate and combustion residues. To have the best resistance against corrosion, it is necessary to clean and lubricate the shotgun after each use, especially after use in wet and saline environment.

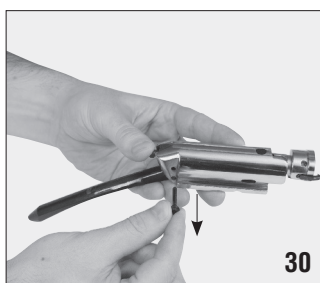
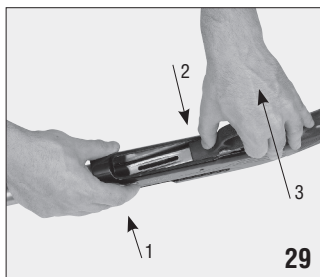
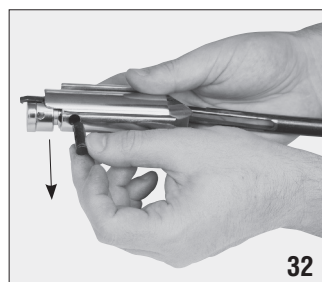
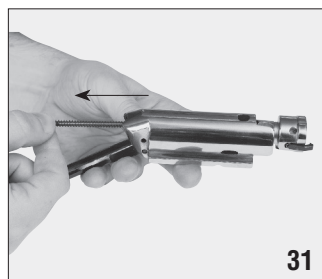
Materials and equipment necessary for cleaning and lubrication;

- Cleaning rod
- Cotton bore patches
- Brass bore brush
- Powder solvent

- Small soft brush
 - Good quality shotgun oil
-
- After use, to remove any powder and lead residue in the bore, scrub the barrel and chamber using the bore brush with powder solvent. Then do not forget to swab the bore and the chamber with shotgun oiled cotton patches to protect from rust and corrosion.
 - At the end of the hunting season or after a high number of shots (about 500 shots), disassemble the bolt assembly and clean it with a soft brush and shotgun oil. Then dry it carefully with a soft cloth and oil the parts lightly.
 - Take care of the trigger assembly as it is described for the bolt assembly.
 - Clean the outside of the magazine tube with a shotgun oiled soft cloth and then dry it with a soft cloth and oil the parts lightly.
 - Any powder on the firing wall, barrel, etc. can be cleaned with a brush and powder solvent.
 - All external surfaces should be wiped down with light coat of rust preventative.
 - Avoid using too much solvent for bore cleaning, since prolonged or excess contact can damage the finish of the wood. Make sure to wipe away all the excess solvent and lubricant.









HATSAN

ARMS COMPANY



facebook.com/hatsan.com.tr



twitter.com/hatsan_arms



youtube.com/hatsanarms

Kemalpasa O.S.B. Mah. Ansizca Sanayi Sitesi
No: 303 Ic Kapi No: 1, 35170 Kemalpasa - Izmir - TURKEY
Tel: +90 (232) 878 91 00 • Fax: +90 (232) 878 91 02

www.hatsan.com.tr info@hatsan.com.tr